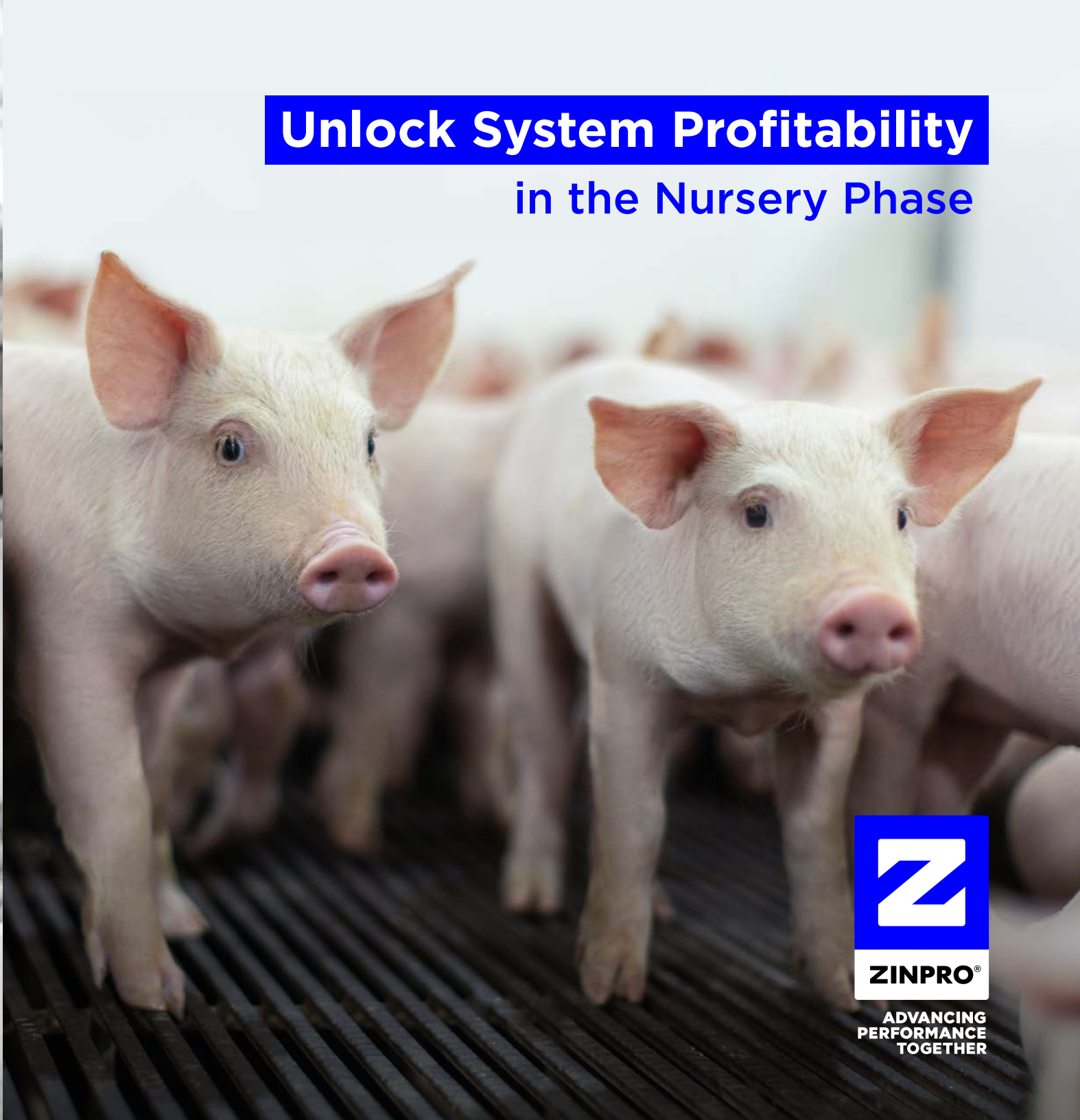




Unlock System Profitability in the Nursery Phase



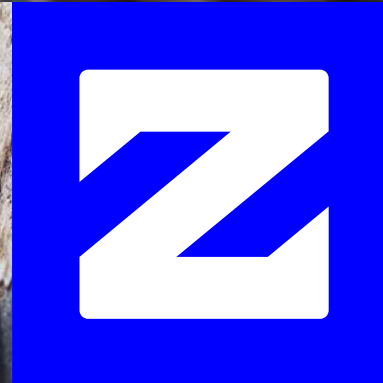
ADVANCING
PERFORMANCE
TOGETHER

A Healthy Nursery is the Foundation for Success

There is always the potential to improve the health and performance of your nursery pigs. Even while facing obstacles, there is opportunity to optimize the livability of your herd through strategic health and productivity decisions.

Partnering with You to Help Your Nursery Pigs Reach Their Fullest Potential

We are here to help you achieve optimal health and productivity, so you can produce more marketable pork for maximum value throughout. We bring over 52 years of concrete proof and unmatched performance to our partnership, so you can feel confident in making the right choice for your animals and business.



ZINPRO®

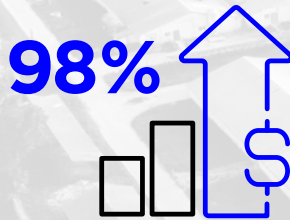


SCAN THE QR CODE TO
Watch the Zinpro® Swine
Customer Success Story

There are Multiple Factors that Contribute to Farm Profitability - Like Cost per Pound of Gain

When it comes to influencing and improving cost per pound of gain, nutrition plays a critical role.

3 Factors that Explain 98% of the Variation in System Profitability



1. Cost of per pound of gain
2. Price per pound of pork
3. Cost per weaned pig

4 Factors Impacting Cost Per Pound of Gain

Cost Per Pound of Gain: Outside Influences



Zinpro in the Nursery Helps You



Improve Pig Robustness

Improve pig health and throughput efficiency



Lower Cost of Production

Lower your overall costs



Improve System and Labor ROI

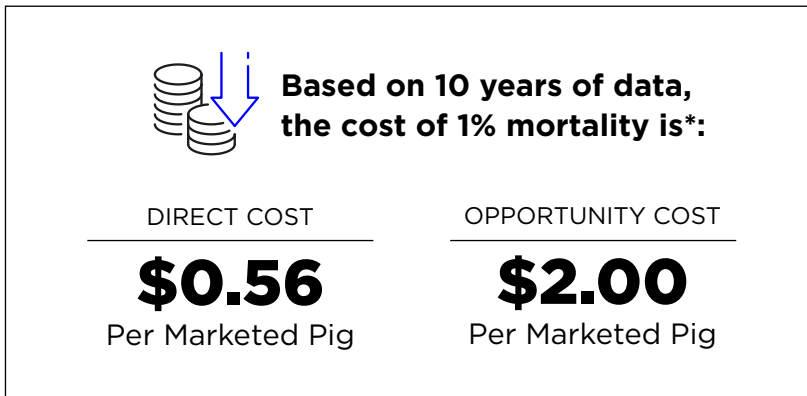
Decrease labor time spent managing health events

Optimize the Health and Livability of Your Nursery Pigs

System health and throughput are essential for achieving animal wellbeing and productivity. A 1% change in nursery pig mortality can mean the difference between making a profit or loss on a per pig basis.

Imagine What a 1% Increase in Marketed Pigs Out of the Nursery Could Do for Your Bottom Line

Mortality doesn't have to be the cost of doing business



*Based on 3rd party data from 2012-2022.



Depending on health status and seasonal pressure, this number could be **as high as \$20 per pig** with extremely health challenged nursery flows.

Robust and Healthy Pigs

Make a Greater Contribution to Your Bottom Line

Together, we can give your nursery pigs a better chance to thrive, even during unforeseen health pressures.



Proven Next Level Outcomes

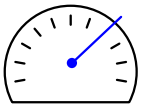
With over 52 years of extensive research, our global team of experts have brought forward solutions proven to advance nursery pig wellbeing and maximize system throughput for the best production results.



Every Finishing Pig Starts in the Nursery

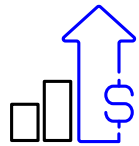
Getting pigs off to a solid start is paramount to boosting your value capture opportunity and ensuring system profitability. Pigs with better immune system competence have a higher exit weight, allowing you to generate greater system throughput.

Nursery pigs fed Zinpro® Zinc at weaning showed improved gain and throughput when challenged with respiratory disease, creating a more profitable outcome.



↑ 2.4 lbs

Body Weight Added at the End of a 6-Week Nursery Turn



+\$1.22

Profit in USD/Market Pig

Based on US average values from the last 10 years.
Reference: RB-S-011



Healthy Pigs Stay at the Feeder and on the Right Track

Weaning is one of the most critical phases in pig production and we understand that an upfront investment must yield a long-term return. It's no secret that healthier pigs eat more and have better immune systems, creating a more productive and profitable pig.

Pigs fed Zinpro Zinc gained more weight, had a reduction in mortality and maintained performance.

+0.05 lb
Per Day ADFI, lb

↓ 5.4%
Medical Interventions

↓ 2.7%
Mortality Rate

Profits up to \$1.59 per pig and reduction of total input costs by \$.011 USD/kg of gain.
Reference: RB-S-013



Nutritional Choices Will Drive Profitability

Feeding Zinpro Zinc reduces mortality, leading to improved nursery pig health, livability and accelerated growth for greater productivity and profitability.

Zinpro Zinc reduced pig mortality on both conventional and antibiotic free (ABF) nursery production systems.

↓ 0.6% in Mortality

Resulted in

↑ \$1.02 Market Pig Profit

(Conventional)

↓ 1.4% in Mortality

Resulted in

↑ \$2.78 Market Pig Profit

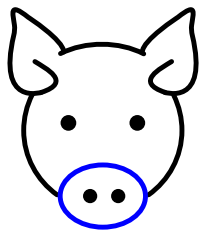
(ABF)

Reference: RB-S-010



Post Absorptive Effects Deliver Results

Including Zinpro Zinc in the diets of nursery pigs allows them to overcome challenges more quickly. With unrivaled absorption and powerful post absorptive effects, Zinpro Zinc equips the pig's immune system to respond more rapidly and with greater success.



Zinpro Zinc

- Improves health and livability
- Enhances performance
- Improve gain
- Better FCR
- Maximizes throughput
- Excellent in field responses
- Overcome challenges quickly
- Maximum value throughput (ROI)

**The Right Zinc
is Zinpro Zinc**



(Not available in all markets)

Solutions from Sows to Finish



For decades we have delivered reliable, proven results that improve swine health and wellbeing. We know the work isn't done - we continue to discover and innovate, leading the way in proven swine nutrition.

Years of Trusted Services to Give You Superior Results

- Dedicated swine nutrition and technical experts
- Scientific discovery, peer-reviewed and commercial application research
- World class manufacturing and customer service
- Sustainability driven

Contact a Zinpro swine expert today

to begin building a partnership that works for you
or visit zinpro.com/swine to learn more



Together, Let's Prove the Power of Partnership.

Something powerful happens when shared expertise, care and nutritional performance come together. Suddenly, obstacles feel more like growth opportunities. That is the transformational power of partnership.



Partner with us at zinpro.com
#PowerOfZinpro



**ADVANCING
PERFORMANCE
TOGETHER**

All trademarks are the property of Zinpro Corp.
©2023 Zinpro Corp. All rights reserved.



S-6085
062023